



# EAST CREEK OFFICE CENTER

1225, 1265 & 1275  
FORT UNION BOULEVARD  
MIDVALE, UTAH



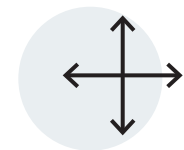
Jones Lang LaSalle  
Brokerage, Inc.



# EAST CREEK OFFICE CENTER



## BUILDING HIGHLIGHTS



**AVAILABLE SPACE**  
750 - 11,707 RSF



**LEASE RATE**  
\$24.50 Full Service



**MOVE IN READY**  
suites



**IDEAL FORT UNION  
LOCATION**  
access to countless amenities



**CROWN &  
MONUMENT  
SIGNAGE**  
Available



**4/1,000 SF**  
Parking Ratio



**IMMEDIATE ACCESS**  
to I-215



**OUTSTANDING**  
Mountain Views



**NEW OWNERSHIP**



**MAJOR  
RENOVATION**  
recently  
completed

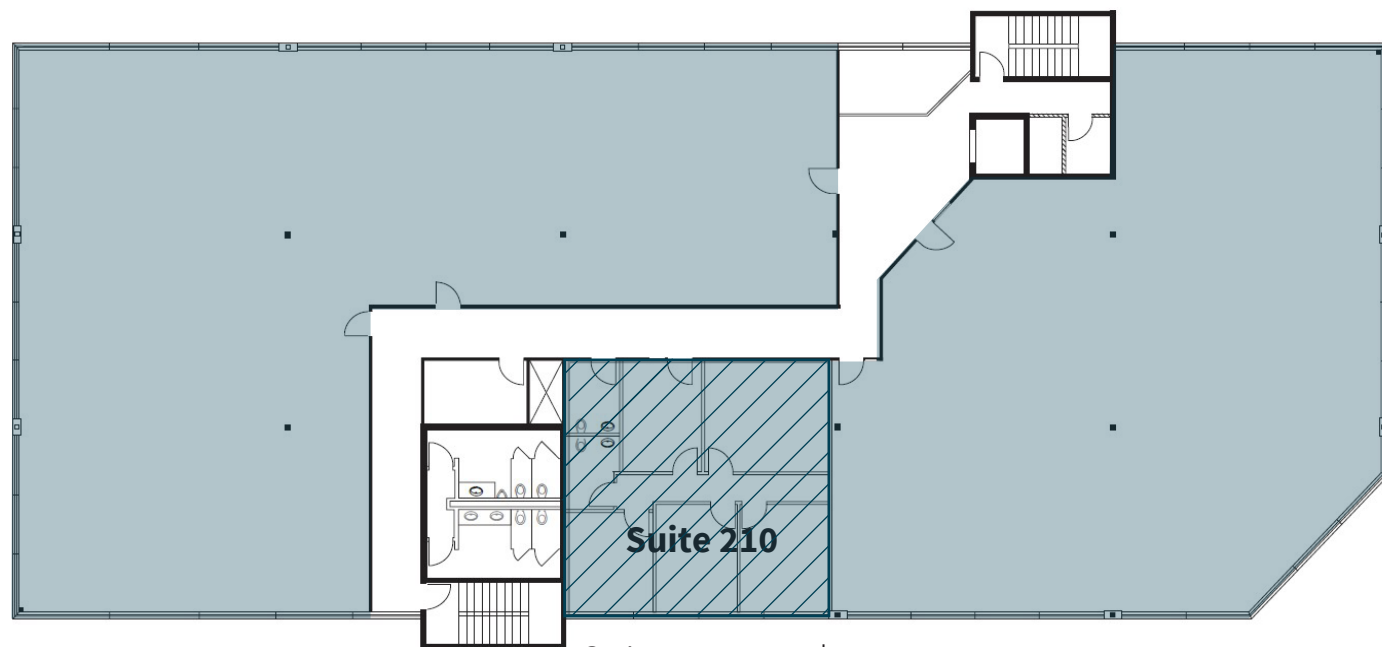


# 1225 FORT UNION BLVD

## FLOOR TWO

**6,153 RSF**  
suite 250

**4,248 RSF**  
suite 200

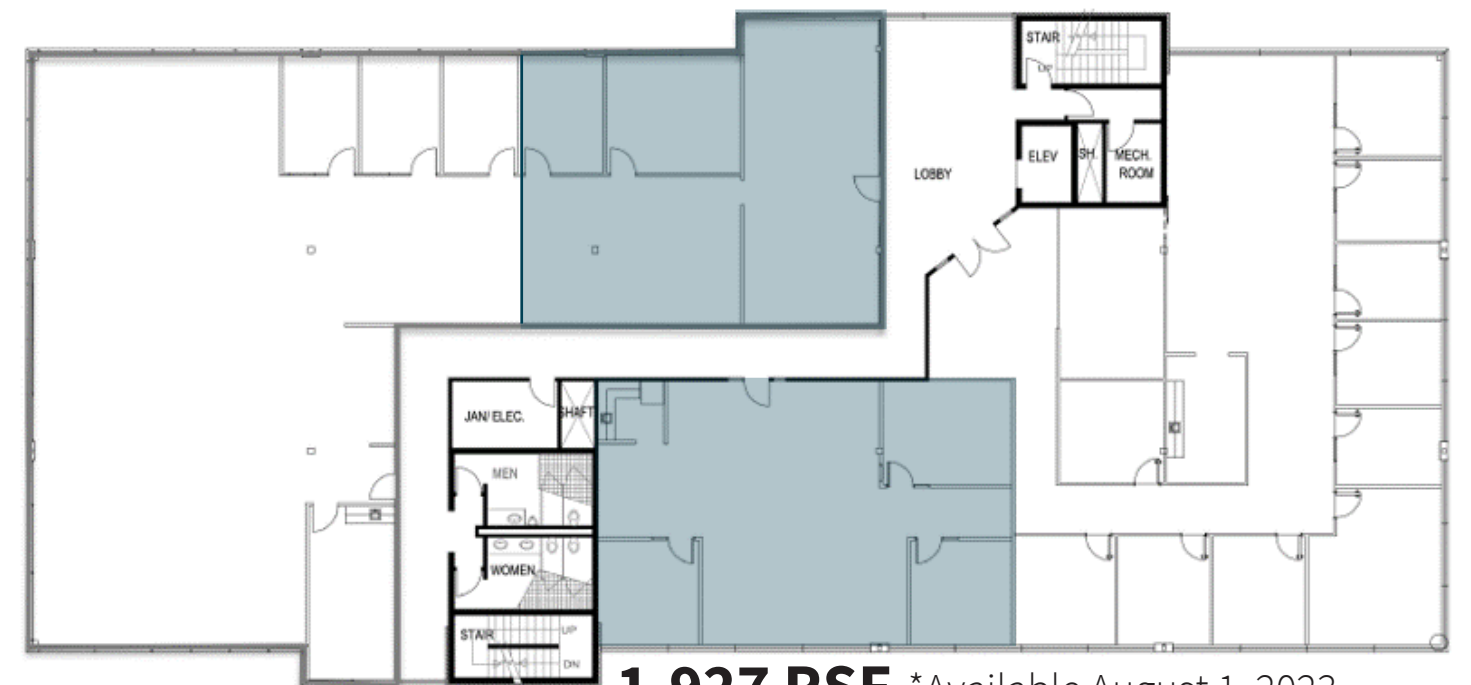


Suite 210 can be made available for **up to 11,707 RSF**

# 1225 FORT UNION BLVD

## FLOOR THREE

**1,974 RSF**  
suite 325



**1,927 RSF** \*Available August 1, 2023  
suite 320

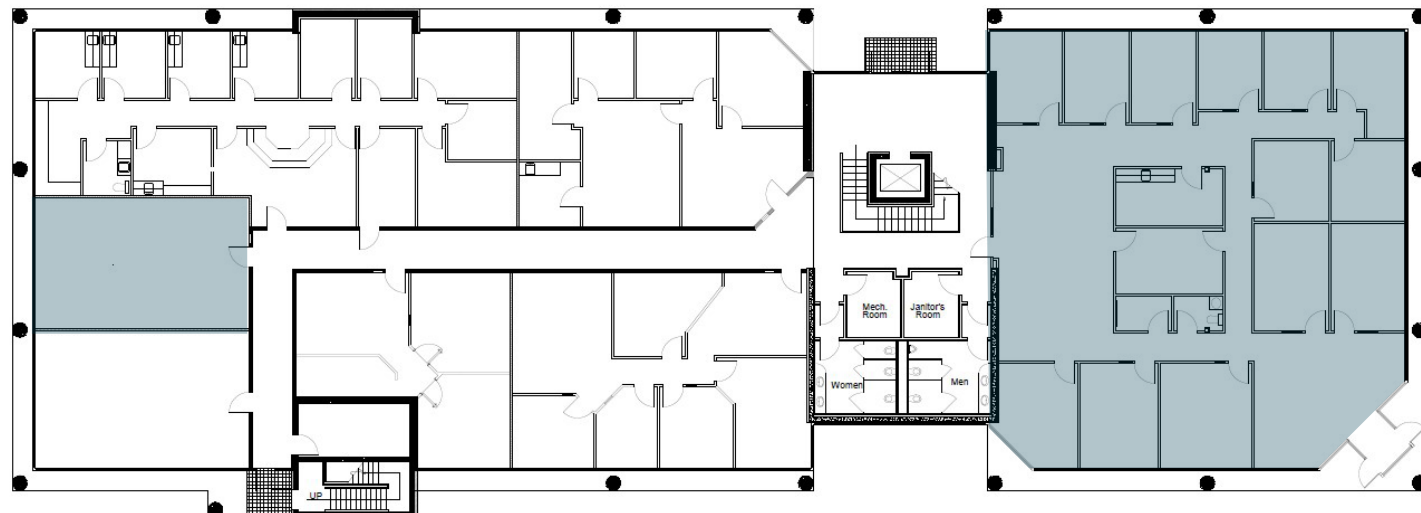




# 1275 FORT UNION BLVD

## FLOOR ONE

**4,735 RSF**  
suite 100



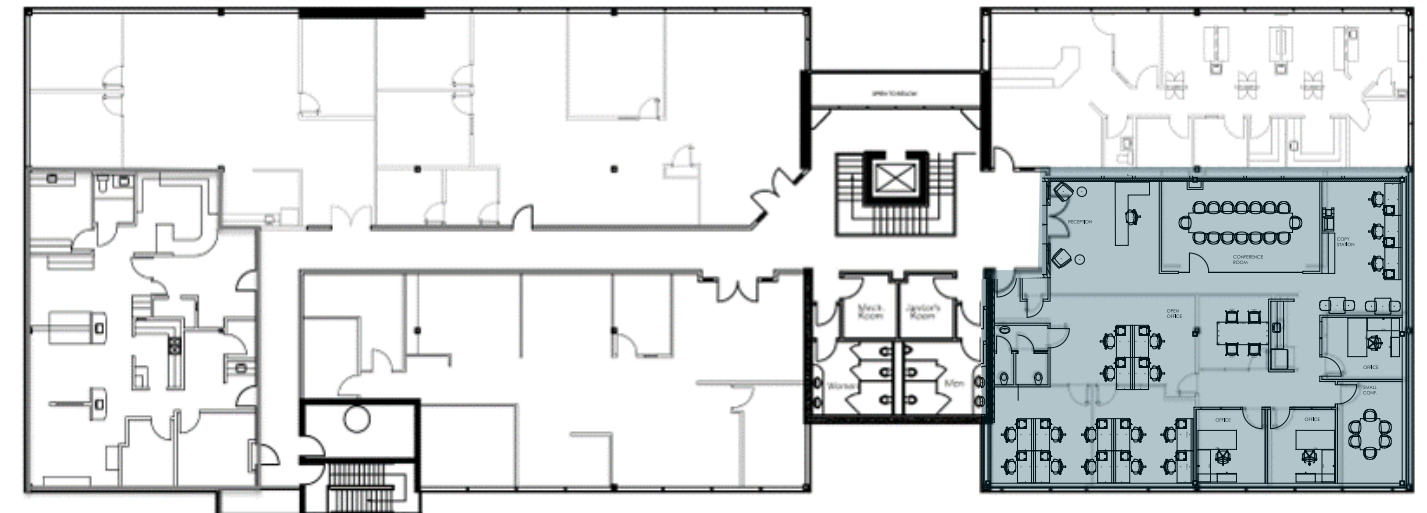
\*Available July 1, 2023

**750 RSF**  
suite 125

# 1275 FORT UNION BLVD

## FLOOR TWO

**3,620 RSF**  
suite 210



\*Move in ready suite







**EAST CREEK  
OFFICE CENTER**

## RESTAURANTS TO THE WEST

- Itto Sushi // The Midway
- Thai Spice Restaurant
- La Frontera Mexican Restaurant
- Kneaders Bakery & Cafe
- Rise & Grind Coffee // Landmark Grill
- Epicure Fine Food & Drink
- Hires Big H // Bohemian Brewery





## CONTACT INFORMATION

**Jami Marsh**

[jami.marsh@jll.com](mailto:jami.marsh@jll.com)

+1 801 456 9514

**Amanda Lawson**

[amanda.lawson@jll.com](mailto:amanda.lawson@jll.com)

+1 385 419 3191

**JONES LANG LASALLE BROKERAGE, INC.**

**©2023 JONES LANG LASALLE LP, INC. ALL RIGHTS RESERVED. ALL INFORMATION CONTAINED HEREIN IS FROM SOURCES DEEMED RELIABLE; HOWEVER, NO REPRESENTATION OR WARRANTY IS MADE TO THE ACCURACY THEREOF.**