



Jones Lang LaSalle
Brokerage, Inc.

LEASING
NOW

**UNION
PARK II**
7050 & 7070





BUILDING HIGHLIGHTS



Building Signage and Excellent Visibility



Move-in Ready Spec Suites Available



Covered and Structured Parking



Highly Walkable with Access to Fort Union Shops + Restaurants



Class A Finishes



Stunning Mountain Views



High-Speed Fiber Optic Network and Internet Connectivity



Fitness Center

Space for your ideas to grow.

Available Space
2,072 SF - 14,809 SF

Parking Ratio
4.00/1,000 SF

Lease Rate
\$26.00 FS

Timing
IMMEDIATE

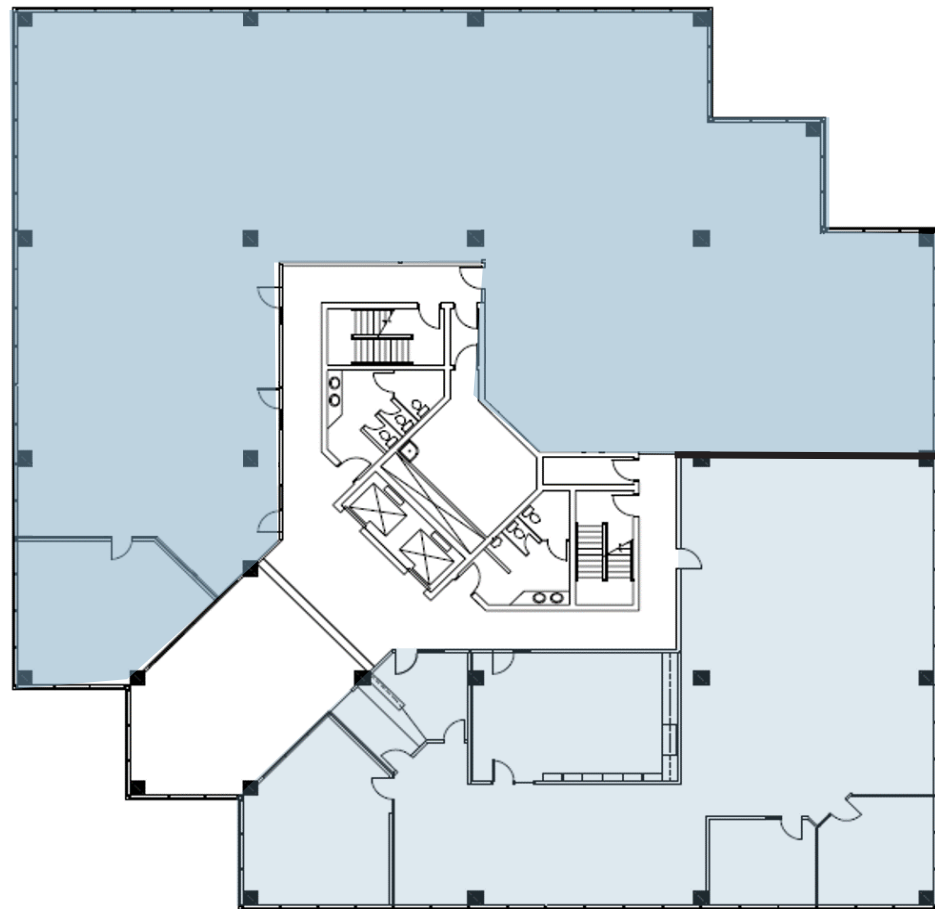


Talk about making a **first impression.**

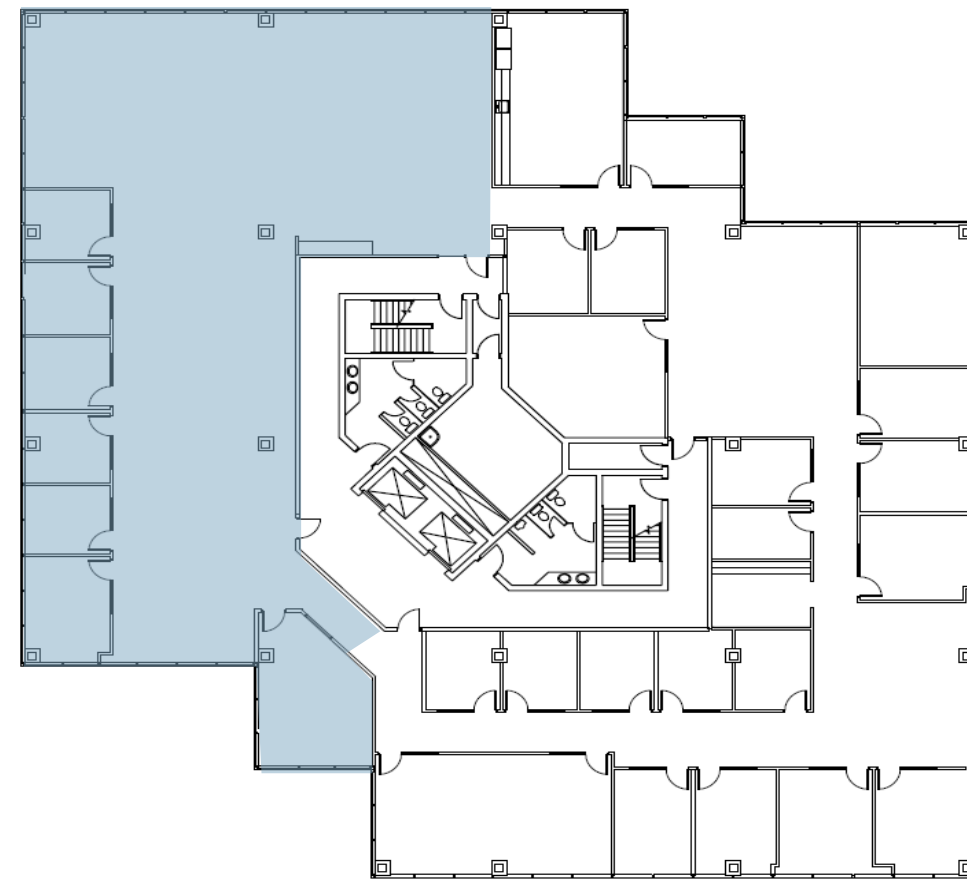




FLOOR 2 | SUITE 200
DIVISIBLE
2,500 - 14,809 SF



FLOOR 6 | SUITE 600
AVAILABLE
6,236 SF



Area Amenities

UNION PARK
7050 & 7070

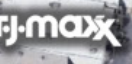
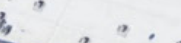
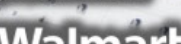
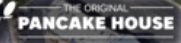
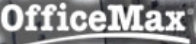
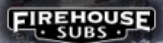


UNION PARK
7050 & 7070

900 E

Fort Union Blvd

S 1300 E



RESTAURANTS TO THE WEST

- Itto Sushi // The Midway
- Thai Spice Restaurant
- La Frontera Mexican Restaurant
- Kneaders Bakery & Cafe
- Rise & Grind Coffee // Landmark Grill
- Epicure Fine Food & Drink
- Hires Big H // Bohemian Brewery



**UNION
PARK** ||
7050 & 7070



CONTACT INFORMATION

David Nixon
david.nixon@jll.com
+1 801 456 9518

Jillian Johnson
jillian.johnson@jll.com
+1 801 456 9517

www.us.joneslanglasalle.com/saltlakecity

Jones Lang LaSalle Brokerage, Inc.

©2023 Jones Lang LaSalle LP, Inc. All rights reserved. All information contained herein is from sources deemed reliable; however, no representation or warranty is made to the accuracy thereof.